



Technical Specifications

Lighting

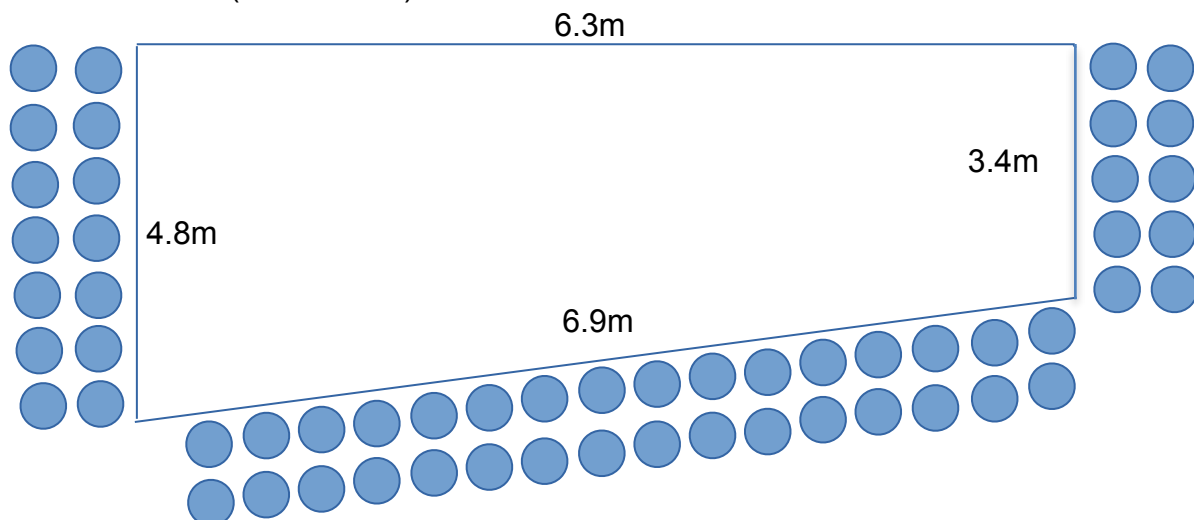
- Conventional lighting: 4 x Showtech StudioBeam 575
- LED lighting: 2 x Showtech Club PAR 12/6 RGBWAUV
- Lighting control & dimming: 1 x Zero88 Betapack
1 x Zero88 12/24 Jester Lighting Desk
- Accessories: 6 x HPL 575 GY9.5 Theatre lamp

Sound

- Control: 1 x Yamaha Emix 5000 -12
- Projection: 2 x D.A.S. DS-8 Speaker

Performance space

- Dimensions (not to scale):



- Capacity: 50 seats
- Upstage railing backs onto archaeological site (photo below)

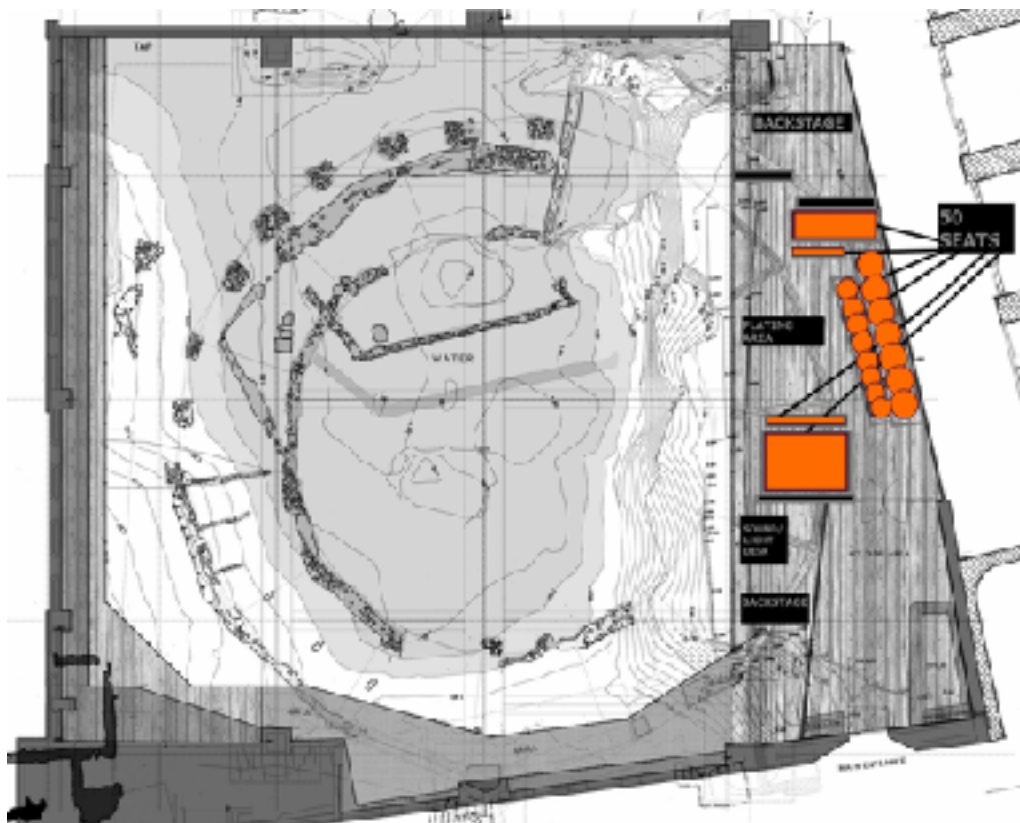
Facilities

- There is a single dressing room space stage right. This comes with a table, mirrors, chairs and a clothes hanging rail.
- Please be aware that currently there are NO TOILET FACILITIES on site.

Archaeological site



The picture above is of the remains of the original site of The Rose Playhouse which lie upstage of the current performance space. This is off limits to performers and audience members. The wall on the other side can be used if it is necessary to the performance, but in this case we ask that a tailored proposal is submitted. All decisions on whether or not a submission is granted are made by the Rose trustees and consultants.



Finding The Rose

The theatre is directly next and adjacent to Southwark Bridge on Park Street. The nearest station is London Bridge, approximately 5 minutes walk away, which is on the Northern line, Jubilee line and National Rail trains.



Contacts at The Rose

<i>General Manager</i>	Beatrice Outram	beatrice.gm@roseplayhouse.org.uk
<i>Box Office</i>	020 7261 9565	boxoffice@roseplayhouse.org.uk
<i>General Enquiries</i>	020 7261 9565	info@roseplayhouse.org.uk